

# INTRODUCING Lucan Community College

---

**Information Night  
for  
Parents/Guardians  
of Accepted  
Applicants 2025/26**



# Presenter 1

**John Grimes**

**Incoming 1st  
year induction  
coordinator**

# Welcome



Whether this is your first time to have a child in our school or whether this child is following in the footsteps of an older sibling, remember that you are listening this evening with one child in mind (or maybe two for those of you with twins!)

Every child will have a unique educational journey through our school



# Purpose of Tonight

---

To outline the remainder of the Admissions process

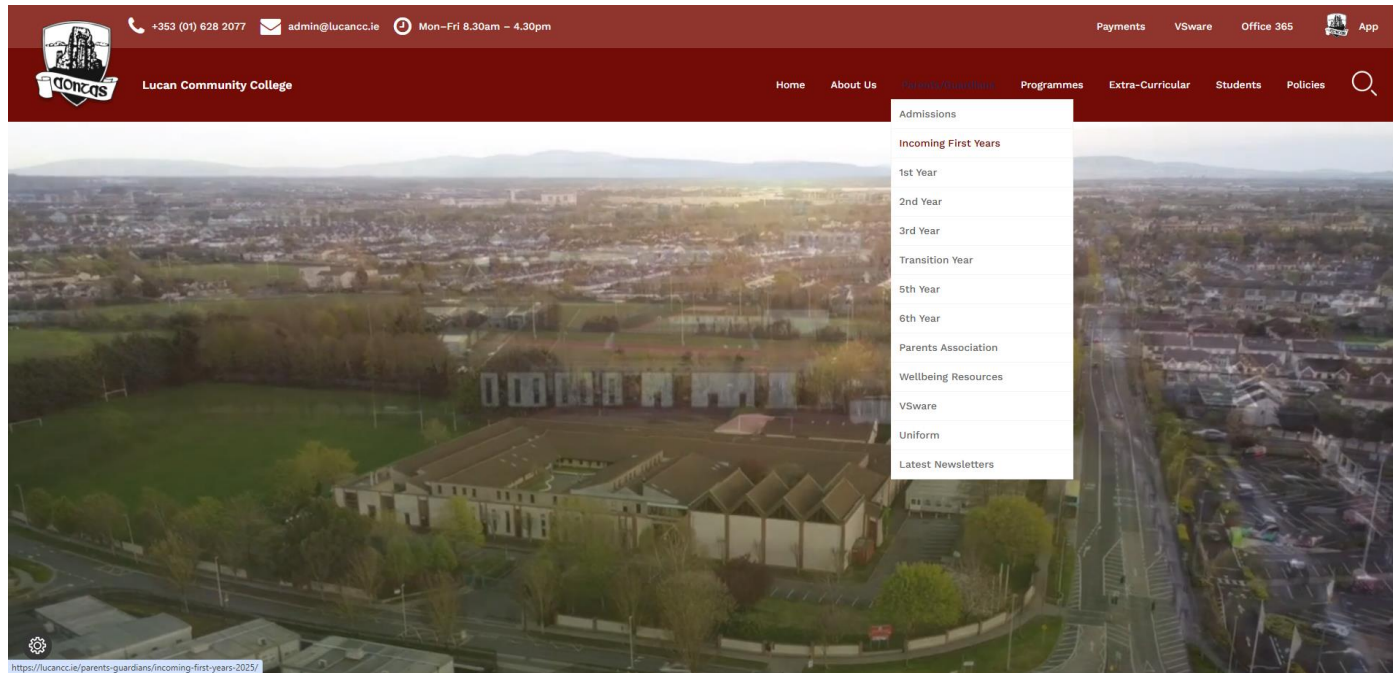
To confirm your choice of Lucan Community College for your son/daughter

# Agenda – Part 1 – J.Grimes



- Online pack contents
- What is Gluais?
- Assessment 5th/12th February 2025
- School Calendar & Timetable
- Attendance & Punctuality
- School Programmes
- Uniform
- Homework and study
- Journal
- The Junior Cycle
- Reporting on progress
- Tips for parents of incoming 1st years

# Accessing the Online Information Pack



[www.lucancc.ie](http://www.lucancc.ie)

- Hover over Parents/Guardians
- Click Incoming First Years

Information Pack with will be displayed here shortly



## Incoming First Years

### Welcome to the information page for 1st Year 2025

Please check our Admissions Page for information about our Admissions process for 1st year 2025.

The closing date for applications has now passed and places will be offered and waiting list created by Friday 15th November.

This page will be updated with useful information as places are offered for 2025 and as we work through the Enrolment process.

# Online Information Pack - currently being updated



Slides from information evening



Assessment Day 2025



Various policies that are important to read



Health Information Form Survey – only complete if student has chronic (long-term) illness



Locker Rental Information



Uniform Details – read and purchase from supplier



Subject Information and online Subject Option Form – notification will be sent when it is time to complete subject options



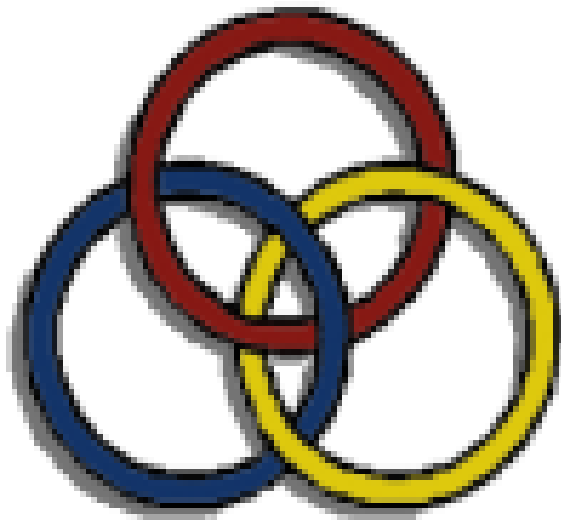
# Online Pack - Additional Info

---

- Advice from other parents
- Child Protection Guidelines (Post-Primary)
- Religious Education explanation
- Homework & Study Policy
- Frequently Asked Questions



# Gluais – Student Leaders



- Team of 5th year students
- Support first year transition
- Leadership Training
- Building relationships with students in first year
- Organising first year events

# Incoming Assessment Tests

Assessments – 10.00 -12.30

5th Feb Scoil Aine

12st Feb All other schools

- Tasks involve thinking about shapes and patterns, words, numbers and some questions are answered by mentally generating and transforming visual images.
- Provides school with baseline data on student attainment and supports needed.
- Tests are online and students should bring a wired headset with them (3.5mm)

What next?

- Request a meeting/phone call through front office if there is something of a sensitive nature that you wish to communicate to the school
- Tour of schools for students in May by Gluais team
- Special tour for students with additional needs
- Meeting for parents after 4-6 weeks in October

# The School Calendar

---

Calendar provided online during June  
and is published on our website

School Closures – as agreed by  
Department of Education

School Closures/Early finishes – School  
Management

- Staff Meetings
- School Development Planning
- Parent Teacher Meetings
- In-Service
- Special events



<b>Monday</b>	<b>Tuesday</b>	<b>Wednesday</b>	<b>Thursday</b>	<b>Friday</b>
8.50 - 9.48 Maths	8.50 - 9.48 French	8.50 - 9.48 Engineering	8.50 - 9.48 Engineering	8.50 - 9.48 Religion
9.48 - 10.46 English	9.48 - 10.46 P.E.	9.48 - 10.46 Applied Technology	9.48 - 10.46 Maths	9.48 - 10.46 Science
10.46 - 10.56 Pastoral Care	10.46 - 10.56 Pastoral Care	10.46 – 11.06 Pastoral Care	10.46 - 10.56 Pastoral Care	10.46 - 10.56 Pastoral Care
10.56 - 11.08 Break	10.56 - 11.08 Break	11.06 – 11.18 Break	10.56 - 11.08 Break	10.56 - 11.08 Pastoral Care
11.08 - 12.06 Digital Wellbeing	11.08 - 12.06 Religion	11.18 - 12.16 English	11.08 - 12.06 Science	11.08 - 12.06 Geography
12.06 - 13.04 Engineering	12.06 - 13.04 Geography	12.16 - 13.14 French	12.06 - 13.04 C.S.P.E.	12.06 - 13.04 Irish
13.04 - 13.49 Lunch	13.04 - 13.49 Lunch		13.04 - 13.49 Lunch	13.04 - 13.49 Lunch
13.49 - 14.47 History	13.49 - 14.47 Maths		13.49 - 14.47 S.P.H.E.	13.49 - 14.47 Applied Technology
14.47 - 15.45 French	14.47 - 15.45 Irish		14.47 - 15.45 English	14.47 - 15.45 History

*Typical timetable structure – subject to change*

# Attendance and punctuality

Importance of communication – prior to or on day of absence and on return

Importance of punctuality

Educational (Welfare) Act

- National Education Welfare Board/Tusla
- In-year reporting to parents and NEWB
- End of year reporting to parents and NEWB

Why?

- Achievement
- Sequence in Learning: avoiding disruptions
- Memory and built-in class revision
- Legislation

# Your Child and the Next Six Years

Junior Cycle Years 1 – 3

Compulsory Transition Year 4<sup>th</sup> year

Leaving Certificate Applied  
5<sup>th</sup>/6<sup>th</sup> usually offered every second  
year

Leaving Certificate (both Established  
and Vocational Programme) 5<sup>th</sup>/6<sup>th</sup>



# Uniform





# Uniform points of information

- Students wear kilt or trousers
- Solid plain black footwear - this is necessary because we have many outside parts to the school
- Compulsory crested school coat
- PE tracksuit – full tracksuit, crested top and bottoms (crested leggings also available).
- Full details of uniform and uniform supplier on website



# Homework and Study Policy

Stages of policy:

1. Getting it done
2. Understanding
3. Correcting homework
4. Taking notes
5. Studying
6. Revision

Supported by year management team  
and implemented by student, teacher  
and parent

Supervised study available (in 3<sup>rd</sup> &  
6<sup>th</sup> Year)



# Journal sample - spot the difference!

Subject/Ábhar		Homework and Learning/ Obair Bhaile agus Foghlama		Due Date ✓
Maths	Fractions	Pg 10 Q.1-20		10 ✓
English	"Wonder"	Read Chapter 1		15 ✓
Irish	Mé féin - essay.	Use pg. 5 to help. Due Friday.		20 ✓
French	Learn colours	pg. 21 - practise using Quizlet link in Teams.		15 ✓ 5 ✓
Science	Draw and label Digestive System.	Pg. 18. Test Thursday.		15 ✓ 15 ✓
Technology	Draw figure	Pg. 8 & label.		10 ✓
To Remember / Cúlraigh: Training@ fpm				

Subject/Ábhar		Homework and Learning	
Maths	Questions		
English	Read		
Irish	Essay		
French	Learn		
Science	Draw		

*Student journals will be available from school during student induction days. Cost is included in the Admin charge of €50.*

# Junior Cycle (1<sup>st</sup> – 3<sup>rd</sup> Year)

The Junior Cycle focuses on acquiring key skills & new approaches to assessment and reporting.

Very much a student-centred approach

Students currently study 10 subjects for the Junior Cycle Assessment

Other Learning Experiences (including Wellbeing - CSPE, PE, SPHE & Digital Literacy) are reported on

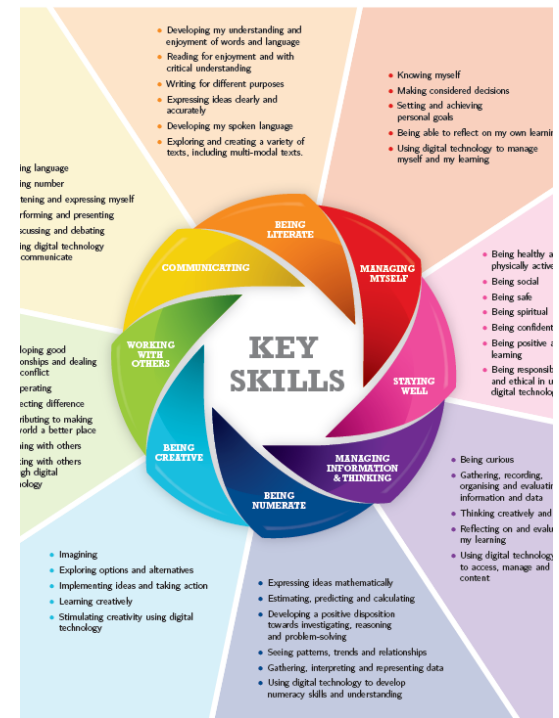
Involvement in extra-curricular activities is also valued and reported

Active learning methodologies (aligned with school focus)

Focus in 1<sup>st</sup> year is on transition from primary, laying a good foundation for life-long learning

Full details available: <https://ncca.ie/en/junior-cycle/>

## Key Skills of Junior Cycle

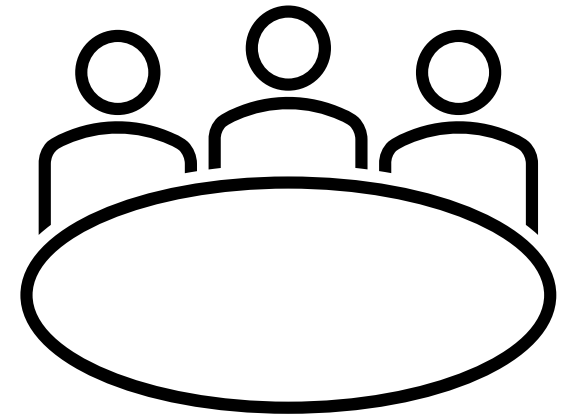
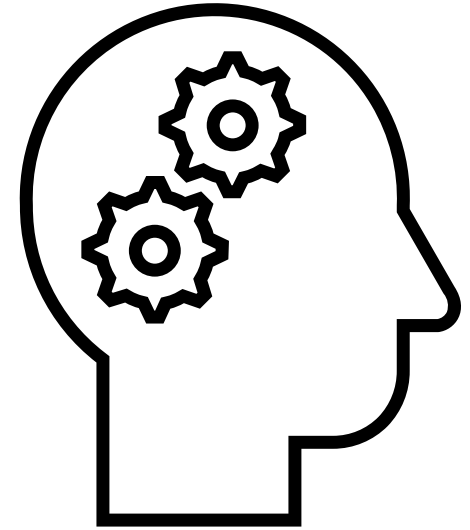


# Junior Cycle Keywords

**CBA/Classroom based assessment:** (2nd year & 3rd year) - including oral tasks, variety of written tasks, practical tasks (designing or making), artistic performances, scientific experiments, projects-based tasks

**AT/Assessment Task:** Completed in class under supervision of teacher; based on learning outcomes from CBAs, assessed by State Exam Commission & part of overall grade.

**JCPA/Junior Cycle Profile of Achievement:** Official school certificate with exam results, CBAs, Other Learning Areas and Wellbeing reported (received during the year following 3<sup>rd</sup> year)



# Reporting on Progress



- Twice Yearly reports on academic and social progress in school year – usually Christmas and Summer (accessed through VShare system)
- Annual Parent Teacher Meeting (short conversation with subject teachers)
- Where an issue of serious concern arises, please contact front office to arranged individual teacher/tutor/Year Head meeting with parent

# Extra- and Co- Curricular Programme

Supported by staff volunteers

No charge for individual extra-curricular activities – subsidised through the voluntary contribution

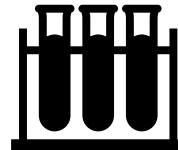
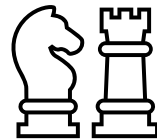
Almost **50 activities** on offer throughout the year - <https://lucancc.ie/extra-curricular/>

School Tours (local/ international)

Student leadership: Gluais, Student council, Prefects, Diversity Team, Lift, and may more groups.

# Activities in LCC (sample)

- School Choir & Concerts
- ETB Festival of Music
- Gaisce
- History Visits
- Seomra na Gaeilge / Seachtain na Gaeilge
- Quiz Teams
- Athletics/Cross Country
- Basketball
- Girls' Rugby
- Boys' Rugby
- Gaelic Football (Girls/Boys)
- Hurling
- Volleyball
- Ultimate Frisbee

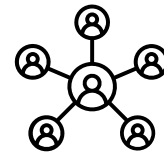


- Camogie
- Badminton
- Chess club
- Games club
- German Exchange
- TY French Trip
- Fundraising
- School Environment teams
- Soccer
- Hockey
- Young Scientist and SciFest

# Value of Extra & Co-curricular activities:

---

- Personal development
- Team-work
- Self-esteem and confidence
- Building relationships with staff
- Making new friendships
- Broader educational experience
- Leadership opportunities
- Subject reinforcement
- JCPA – recorded on official documentation





Tips for  
incoming  
parents &  
students



# Tips 1: Books/ equipment

## Labels

- Name – ensure your child's name is on everything: books, pencil case, clothes, folders, keys, water bottles, etc.

## Books

- Books and some basic class resources are now covered by the Book Grant Scheme and will be distributed to students before classes start. Most books are now available online also (code inside) so students can access them when doing homework – reduce weight of bag

## Uniform

- Uniform is available from suppliers in June/August
- Details will be on website – incoming 1st years

## Organise

- Help your child to organise their equipment from the start – pockets/folders with books/copies for each subject; colour coded; PE gear; Home Economics ingredients; specialist equipment for some subjects. This will help with locker access.

## Tips 2: Homework/ Communication

Homework – do it on the day you get it!

Projects & CBAs – do not leave until the last minute, break up into sections and get it completed well before the deadline: “It’s just a project!”

School app notifications – please ensure that you have downloaded the app when we invite you to. Ensure the school has your current mobile number on file for urgent phone calls

Calendar – keep an eye on the calendar (posted/journal/ website calendar/) to see early finishes or days when events are happening

## Tips 3: Lunch/travel

---

1<sup>st</sup> to 3<sup>rd</sup> year students can stay in for lunch (packed lunch or use school canteen) or go home for lunch. They cannot visit any shops or shopping centre areas.

---

Healthy eating policy – please encourage students to eat nutritious lunches and snacks – no peanuts please

---

Cycling – we encourage students to cycle but please ensure they wear a helmet and lock their bike securely, walk while in school grounds and use a light during darker months

---

Cars – there is no room for parents to park on-site during the school day and the front entrance is not a safe area for dropping/collecting students – please arrange to meet your child further away from the school entrance

# Presenter 2

Gráinne  
Malone

Deputy  
Principal

# Agenda - Part 2 – G. Malone



Mission/ethos/aims



School App



Policies



Inclusion:

English as an Additional Language,  
Additional Educational Needs,  
Irish Exemptions



Formation of classes



Subjects and Options Process



Extra- and Co-curricular programme

# Mission, Ethos and Aims

- Those parents already with us are familiar with our school ethos – Aontas/Unity and our school and ETBI values
- You can read our Mission Statement on our website:
  - Active learning community
  - Each person is valued and respected
  - Supportive, safe, friendly learning environment
  - Diverse curricular and extra-curricular activities
  - Full potential of all is developed





Lucan Community College

Esker Drive  
Lucan  
Co Dublin



 School office

 News/Notifications

 Gallery

 Calendar

 Notice Boards

 Forms

 Shop

 School

 Competition



A message  
6 days ago

All Reports  
Fri, 20 Dec 20

CONC

Wednesday  
18th 7pm

Celebrate

Season

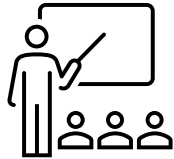
Annual

Mon, 1st

# School APP

- Features include:
- Absence notifications from school
- Absence requests from home
- Push notifications
- School news integration between app, website and social media
- Personal notifications specific to each child
- Permission Slips
- GDPR compliant
- Easier school communication – admin support/email etc
- Integrated calendar





# Formation of classes

Junior Cycle operates with students being placed in two bands of 3 classes - to allow access to a wide range of subjects

Placement in classes is decided based on:

- Consultation with primary school
- Information supplied by parent/guardian
- School resources
- Additional Needs support



# Subject levels for Junior Cycle

- Students in every class have access to subjects at every level and classes operate on a mixed ability basis
- Booklists for all class groups are the same
- All subjects now have a common level (except Irish, English and Maths which have Higher/Ordinary levels)
- Decisions on level of subject to be taken in Junior Cycle exam is decided in 2<sup>nd</sup> year or early in 3<sup>rd</sup> year



## Choosing your Option Subjects – the Process

# 1st Year Subjects September 2025:

## *Non-choice subjects and Other Learning Experiences (OLEs)*

- Gaeilge/Irish (for examination unless exempt)
- English, Maths
- History, Geography
- Modern Foreign Language: French/German
- Religious Education
- Wellbeing: P.E., C.S.P.E. & SPHE

## *Options (selected online)*

- Available options include: Applied Technology, Business Studies, Engineering, Graphics, Home Economics, Music, Visual Art, Science and Wood Technology

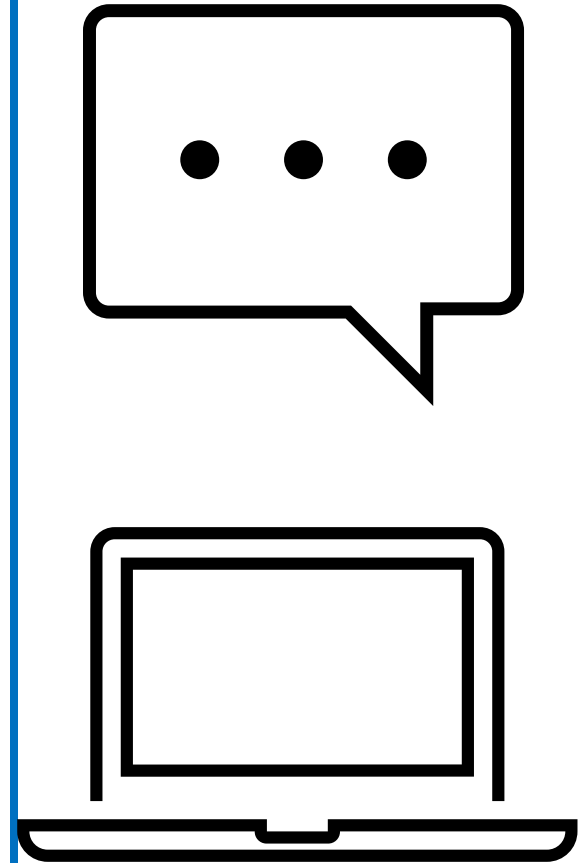
## *Advice to Consider*

- <https://ncca.ie/en/junior-cycle/>
- Open Day experience if you attended
- School options booklet (online pack)
- Talk to others (present students/parents)

The school is currently conducting its annual curriculum review and if any aspect of the JC curriculum changes we will inform you in advance of the 2025 options process

# Online Options process

- You will receive a message – with an initial username and link to VShare (our school management software) - this username will change to single family username once your child joins in September 2025 (current or future siblings)
- Instructions & demonstration video will be available on the school website
- Once you receive your username, options can be entered for one week (7 days to complete this). Options can be changed during this period (software autosaves entries)
- You will then choose your option subjects in order of preference – further instructions will be given when curriculum planning is finalised



# Screenshot of VSware Options

Hi, William [Sign Out](#)

[My Children](#)

## Student Options

PLEASE NOTE:- You can use this screen to enter the preferred subjects that your son/daughter would wish to student in the next school year. Please note that the order of preference does make a difference and No.1 will be get priority over No.2 etc. Our College will use this information in the compilation of Subject Option Blocks. We will endeavour to ensure that each student will be permitted to study their preferred subjects but we cannot guarantee this.

On the table(s) below, choose subjects in order of highest priority of preference (1, 2, etc.).

Preference Number	Subject Choice
1	HOME ECONOMICS
2	FRENCH
3	BUSINESS STUDIES
4	MATERIALS TECHNOLOGY

Options entry completed

# Sample Of Timetabled Options

Line 1	Graphics	Science	Music	Home Economics
Line 2	Applied Technology	Visual Art	Business studies	Science
Line 3	Engineering	Wood Technology	Science	Home Economics

- Please note that subjects can clash with each other, and this may affect the subjects you can study.
- There is no way to predict this in advance so you should choose subjects order of preference – based on numbers choosing a subject and available resources (teachers/rooms etc).

# Important points about options

- Every effort is made to allocate subjects based on student preferences
- Due to resource issues (size of classes, staff, specialist classrooms) it is not possible to give everyone their 1, 2, 3.
- We will ensure we place sufficient science classes on option lines to serve the needs of everyone who places Science as number 1 on option preference
- Efforts made to balance options offered to ensure no one receives the lowest selected preferences
- Important that you reflect before deciding your preference on student interest and aptitude, possible career options
- Process for addressing option issues can be addressed right up to the start of school term



# Inclusion: Additional Education Needs (AEN)

Under the New Model of Allocation of Resources, the school receives a general allocation of hours to support students.

However, we welcome copies of assessment reports as they help inform planning for supports – thank you for uploading them to Enrol – MIT on acceptance

The school also receives a general allocation for SNA support. We need to know of any support received in primary school to enable planning – thank you for sharing this in the survey you completed

# Irish Exemption

## Circular 0055/2022: Criteria:

- a. students whose education up to 12 years of age was received outside the State for a minimum of 3 years and where they did not have opportunity to engage in the study of Irish
- b. students who are being enrolled after a period (at least 3 years) spent abroad,
- c. students who:
  - i. present with significant learning difficulties **and**
  - ii. at the time of the application for exemption present with a Standardised Score at/below the 10th percentile.
- d. students who experience a high level of multiple and persistent needs and who satisfy certain other criteria.

*Students will often still attend Irish class and are included in a meaningful way in aspects of Irish language and cultural activities*

**Thank you for uploading Irish exemption cert from primary school on our acceptance platform**

**If you think your child should have an exemption, email the office and ask for an application form**

Inclusion:  
Students  
with English  
as an  
Additional  
Language  
(EAL)

Possibly eligible for  
special support:

- Applicants whose first language is not English
- Applicants who arrived to Ireland and started school after 11<sup>th</sup> birthday

Thank you for completing  
online Survey about  
English as an additional  
language

# Presenter 3



**Diane  
Birnie**



**Principal**

# Agenda - Part 3 – D. Birnie

School Updates

School Evaluation Reports

School structures

- Patron – DDLETB
- Board of Management
- Parents Association

Policies

Finances

Role of parents/guardians

# Updates



## **Established:**

Lucan CC (since 1987)  
and Vocational School  
since 1950s  
High standards  
Good track record  
Strong extra-curricular  
programme



## **Senior Cycle:**

Introduced newer  
subjects including  
Politics & Society, LC  
Physical Education,  
Computer Science  
Revision of all current  
subjects to follow as  
redevelopment is rolled  
out



## **Technology:**

Wireless technology,  
computer rooms  
Roving tablets/laptops  
Using Microsoft 365 as a  
teaching and  
learning platform



## **Building Plans:**

Temporary  
accommodation  
Extension  
and refurbishment  
Main contractors to be  
approved by DoE and  
building planned to start  
at Easter

# Recent Lucan CC Inspection Reports

Overall, the quality of leadership of learning and teaching was very good. During the evaluation it was evident that all staff were highly committed to ensuring the realisation of the school's mission statement and motto 'Aontas' (Unity)

Teachers are enthusiastic and reflective practitioners

Student behaviour was exemplary throughout the evaluation. .

Students demonstrated a good understanding of the anti-bullying procedures and staff had formed an anti-bullying team to address any concerns that may be raised.

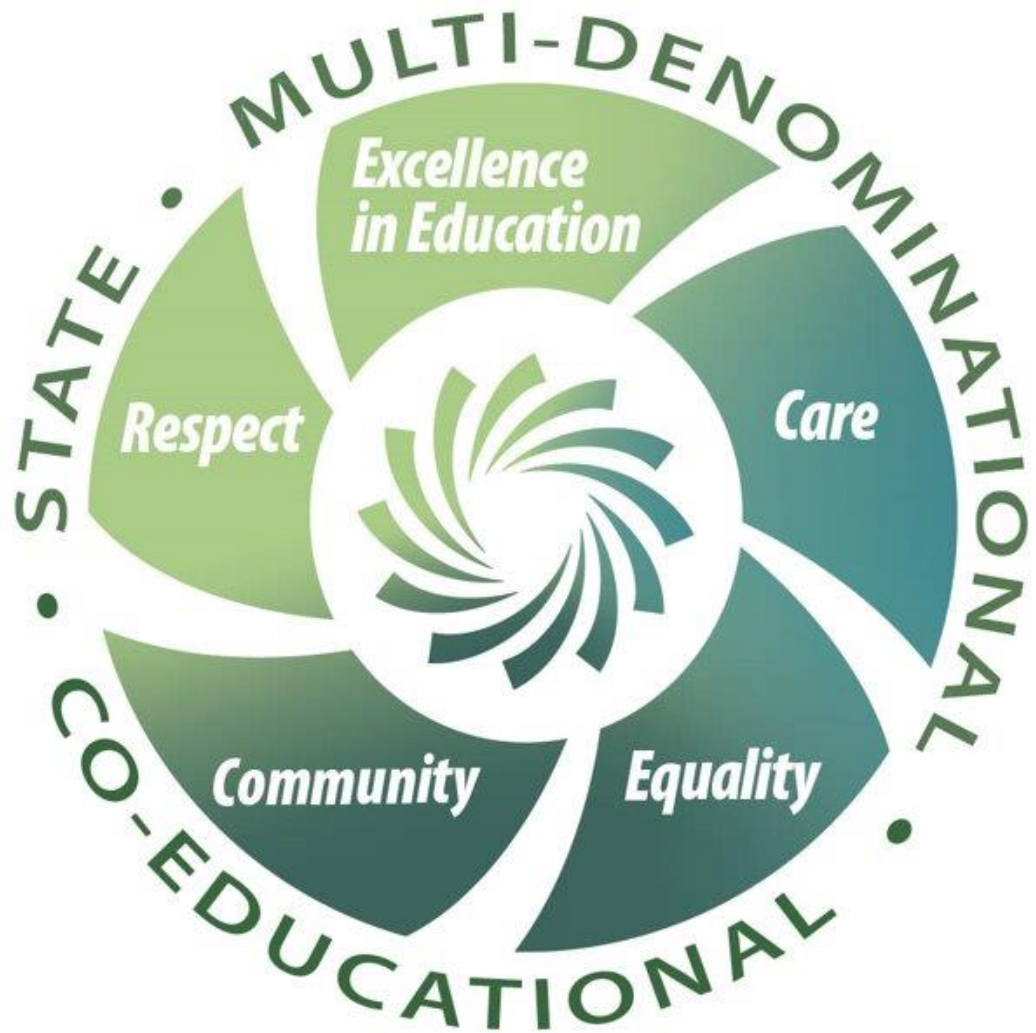
The care for students was a strength of the school and this was evident in the caring environment and sense of community shared by students and other stakeholders of the school.

Students demonstrated a sense of pride in their school.

See [www.education.ie](http://www.education.ie)

Patron:  
Dublin & Dún  
Laoghaire  
Education  
and Training  
Board

# School Structures





# LCC Board of Management

- “Board members were highly committed to supporting the work of the SMT and strong collaborative working relationships were evident.” [WSE-MLL report](#)
- Chair: Dr Rose Dolan
- 4 ETB Nominees
- 2 Parent Nominees
- 2 Teacher Nominees
- 2 Board nominees representing community interests



"The board, the SMT and staff made considerable efforts to ensure that the learning environment was warm and welcoming, that it supported student learning and celebrated student achievements." [WSE-MLL report](#)

# LCC Board of Management: Roles

- Providing guidance, governance & support
- Contributing to school improvement
- Being an ethical friend to the whole school community



# Parents Association



- As parents/guardians, you are all members of the Parents' Association
- AGM elects representative Committee
- Current priorities
  - Pass on issues of concern to parents as a body in dealings with Principal/ school;
  - Fundraising ideas and developing a calendar of fundraising events;
  - Consulting on policy development;
  - Applying appropriate pressure to ensure that the Extension process proceeds speedily;
  - Debs event for students after graduation

 : @LccAssoc

 : Parents' Association – Lucan Community College

# School Policies



- Admission policy
- Child Protection Policy
- Code of Behaviour including Anti-bullying/Cineáltas policy
- School Self Evaluation report
- Data Access & Protection
- Attendance Strategies
- Health and Safety
- Substance Misuse
- Critical Incident Policy
- RSE/SPHE
- Extra-curricular policy
- Inclusion (SEN) Policy
- Assessment and Reporting
- Staff/parent communication
- Pastoral Care guidelines
- Suspension and expulsion
- Complaints procedure
- Internet Acceptable Use Policy

***Policies available on website. New policies developed and existing policies updated regularly – the PA is your means of consulting on various policies and procedures***

# Behaviour Policy in Action

## School Rules


- Positive and practical
- Certain items banned e.g. tippex, chewing gum, cameras/recording devices/smart watches.
- Healthy environment: student water fountains, no fizzy/energy drinks, healthy lunches, school canteen, no smoking/vaping
- Procedures exist for safety, security, parent information and the law
- Use of Phones – strictly only with teacher supervision and instruction
- Teacher-student and student-student interactions: Rights & Responsibilities, Rules, Rewards and sanctions, Anti-bullying policy




# Finances

- Department of Education, directly and through ETB, funds basic building costs
- Parental contributions covers the rest:
  - Annual €50 to cover student 24-hour insurance, operating costs of the school communication system, locker rental, phone calls and access to IT educational software for all students.
  - Annual €100 voluntary contribution to cover all extra-curricular expenses, awards and other student activities and events (reductions for siblings in school)
- Small number of additional payments during the year to cover some costs – trips, charity fundraising;
- Transition Year €400 fee – extra activities
- Online system through the school app for all payments (MIT) – instructions on webpage on setting up account.
- Thank you for your contribution. This adds to the range of facilities and resources that the school can provide.
- **NB: Payment is NOT collected through VSware**



 **etb**  
Board of Education agus Aitheantas  
An Chathair agus Éireann Lúghairne  
Dublin and Dún Laoghaire  
Education and Training Board

 School Payments System

[Login](#)

[Forgot your password?](#)

[Create Account](#)

Lucan Community College  
[Privacy](#) | [Terms](#) | [Help](#) | [Staff](#)



The best predictor of student success is the extent to which families encourage learning at home and involve themselves in their child's education. (2000, US National Education Service)

Parent **involvement** - parents participate in school events or activities (PTMs, fundraisers); teachers provide learning resources or information about their student.

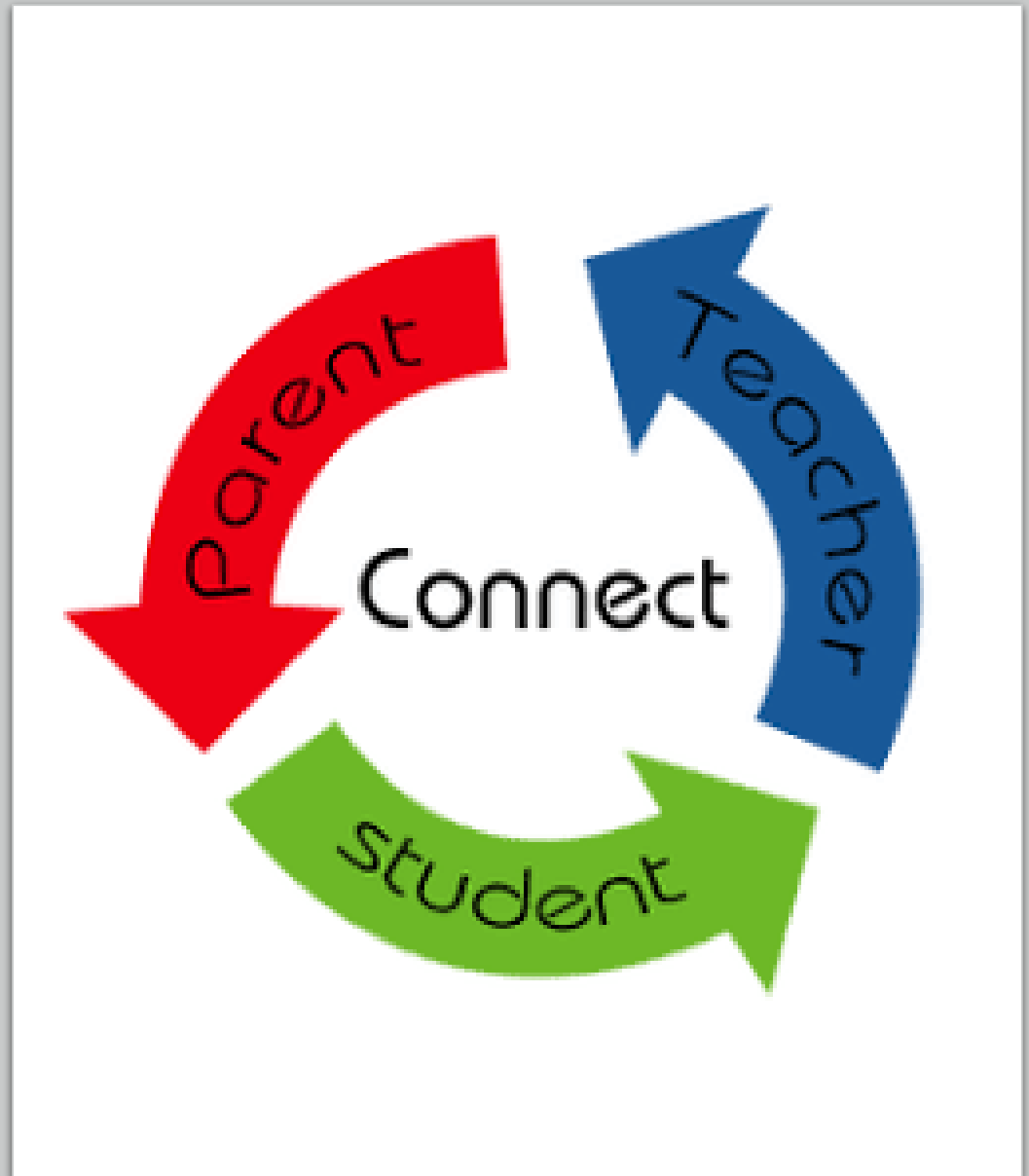
Parent **engagement** happens when parents participate in school meetings or events (PA meetings, Wellbeing committee), and parents volunteer their support at home and at school (homework, events).

Informal parental involvement (e.g. discuss educational decisions with your child) associated with improved exam performance

Choice of subjects and implications – importance of guidance and advice

Our Parents' Association is a vital part of how you can grow real engagement with our school

Lucan CC considers your involvement in your child's education essential





# Communication for Parents/Guardians

- The Journal
  - Read nightly
  - Signed weekly
- School App
  - Communication re lates, absence, etc.
  - VShare – options, attendance, behaviour, reports, etc. Parent VShare App when student joins
  - Online payments
- Teacher Contacts
  - Subject teacher, tutor, year head, DP
- The Office
  - [Email:admin@lucancc.ie](mailto:admin@lucancc.ie)
  - Phone: 016282077
- Online
  - [www.lucancc.ie](http://www.lucancc.ie)
  - @lucancc1
  - @lucancommcollege





Time for your  
questions